



Conservation Times

Conservation Times

For Johnson County residents interested in agricultural and natural resource issues.

Spring 2009

Volume 7, Issue 1

Director Notes:

In this newsletter you will see the many things that your SWCD has accomplished in the past couple of months. As spring approaches, I would like to point out some exciting upcoming events we have planned.

We will be participating with the Extension Office with the 4th grade Ag Days on March 20th at the Johnson County Fairgrounds. Our Youth Board will again be delivering pine seedlings and presenting conservation to county 5th graders in April. Conservation Stewardship Week is April 26 – May 3, 2009.

We continue to slowly work on restoring the first floor of the building, carpet is being installed as I write this. See inside for details on our spring tree sale, rain barrels, and other exciting news.

We can always use assistance if you have some time to help with any of our upcoming projects. Please contact our office for more details.

Annual Meeting

The Johnson County Soil and Water Conservation District held its 59th Annual Meeting on January 21, 2009 in Scott Hall. Over 130 landowners and residents were in attendance. Guests enjoyed a night of delicious food and warm fellowship.

An update was given on Phase III of the Youngs Creek Watershed Project and Phase I of the Indian Creek Watershed Project, and information was provided on various cost-share programs. Justin Armstrong, Curator of The Barn at the Indiana State Fairgrounds was our guest speaker. The Johnson County Youth Conservation Board presented an entertaining skit about forestry in Indiana



Continued on page 2

Inside this issue:

Election Results	2
Youth Board	3
Envirothon	4
Tree Sale	5
Resource Guide	6-7
Tree Sale Order Form	8-9
Cooperator of the Year	10
Lee Moore Award	10
Ag Days	10
USDA Stimulus Dollars	11
Tile Mapping Project	12
Watershed News	13
Rain Barrels	15
Available at the SWCD	16

Mission — To conserve and enhance our soil, water, and other natural resources by coordinating with local partners to provide technical, financial, and educational opportunities in Johnson County.

Board of Supervisors

Barry Barnett
Chairman
Kevin Thompson
Vice-Chairman
Virginia Pollert
Member
Joe Bill Misiniec
Member
Jim Risch
Member

Associate Supervisors

Tom Bechman
Matt Davis
George Ellis
Jim Facemire
Al Meyer
Claude Wade
Bob Weaver

Staff

Ric Schlosser
Director

Kathy Haste
*Assistant Director &
Education Coordinator*

Andy Nichols
Ag Conservation Programs

Debra Ashack
Watershed Coordinator

David Harrell
*Indian Creek Watershed
Youngs Creek Watershed*

Published quarterly and distributed to landowners, farm operators, schools, local agencies, public officials, conservation organizations, and other interested individuals.

Annual Meeting Cont.

Continued from page 1

Several awards were presented for conservation efforts and elections were held for the SWCD Board of Supervisors. More details are inside this issue.

The District would like to thank all those who attended this year's event as well as all of those who generously contributed and donated door prizes. For more information on award recipients and door prize contributors, please visit our web site at www.swcd.org

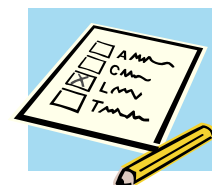


Election Results

An election was held for a vacant position on the Board of Supervisors. Candidates in the election were Kyle Vandivier and Jim Risch.

Jim Risch was elected to a 3 year term on the Board of Supervisors, while Joe Bill Misiniec was appointed by the Board to a 3 year term in the last remaining appointed position.

The 2009 Board of Supervisors will consist of Chairperson Barry Barnett and members Joe Bill Misiniec, Virginia Pollert, Jim Risch and Kevin Thompson.



Youth Board



Have you ever wondered how the youth can help spread the word of soil and water conservation? The Johnson County Youth Board is just one of the ways that youth can learn and spread knowledge about soil and water conservation. The Johnson County Youth Board participates every year in the distributing of pine seedlings, prepares a skit for Johnson County Annual meeting, and participates in the Envirothon.

The Youth Board distributes pine seedlings to fifth graders in the Johnson County community. The members have a presentation on the purpose of a pine tree and how to maintain and care for the seedlings. Each year the Youth Board, SWCD Staff, Supervisors, and volunteers come together to cut the tree roots, wrap the tree roots with a moist paper towel, and package the trees to be distributed to Johnson County schools. During one week, the Youth Board separates into groups consisting of two to three members, and give their presentation to all of the Johnson County fifth graders. After the presentation a pine seedling is handed out to the students to take home.

The skit put on by the Youth Board at the annual meeting also spread the word of conservation. This event was a great way for youth to practice theater arts and meet the residents of Johnson County. The annual skit this year was about contacting a local forester before cutting down trees, for not all trees should be cut down. The participants were: Daniel Bechman, Alyssa Roberson, Amanda Workman, Nathan Barnett, Daniel Roberts, Levi Plummer, Ashley Dunn, Codi Morrison, Kaci Peterman, Leslie Barnett, Paige Erickson, Jerica Richter, and Tom Bechman as the advisor. The members showed the range of people from those who think that all trees should be cut down, to the people who think that some trees should be cut down, but be replanted. When on the Youth Board, spreading the knowledge of conservation is fun, but gaining the knowledge is important also. If this sounds interesting, just think about the fun you could have either participating or watching the annual meeting skit that the Youth Board puts on.



One of the ways that the members gain knowledge is through the participation of the Envirothon. This is the second year the Johnson County Youth Board has participated in the Envirothon. The team members that participated were Alyssa Roberson, Daniel Roberts, Kaci Peterman, Jerica Richter, and Heather Taylor. The team placed seventh out of the seventeen teams. For more information on the Envirothon see page 4.



Envirothon

The Youngs Creek and Indian Creek Watershed projects and the Johnson County SWCD hosted the Central Region Envirothon Competition at the Johnson County Fairgrounds on March 10, 2009. Seventeen teams of five students plus their coaches spent the morning listening to presentations on soils, forestry, aquatic ecology, wildlife and the current issue of biodiversity. Each team then took tests on each subject in the afternoon. Teams from as far away as Clinton County, Richmond and Brazil came to compete, as well as our own Johnson County Youth Conservation Board.

The winner of the competition was the Rossville High School FFA Team 2, with Clinton County 4-H Team 1 taking second place and Rossville High School FFA Team 1 taking third. These three teams will go on to compete at the Indiana State Competition on April 21, 2009, at Camp Camby, for an opportunity to compete in the Canon North American Competition on August 2-8, 2009, at the University of North Carolina, Asheville. The top three national teams will receive academic scholarships totaling \$100,000. The Shelbyville High School Team 1 took fourth place and will step in for any of the top three teams that may not be able to compete at the Indiana State Competition. Good luck to all the teams moving on to the next level of competition!



Johnson County Soil & Water Conservation District

Spring Tree Sale

Orders are due by
April 29, 2009

Trees sold by Johnson County SWCD are produced by Woody Warehouse Nursery, Inc., Hendricks County. The "Root Force System" (RFS) is a three-step root pruning process that stimulates lateral root production.

Woody trees are superior young trees from known parent stock. The seed is gathered in the fall and started in wood heated propagation houses while winter snows blanket the Midwest.

RFS trees have such a well developed root system they virtually begin growing as soon as they are planted. These trees are easy to plant, have a high survival rate, and provide quick results.

Each tree is delivered in its own container and is guaranteed true to type and in good condition at time of pick up.

Many of the species are native to Indiana

Send Completed order and payment to:

Johnson County SWCD
550 E. Jefferson Street
Franklin, IN 46131

Per Tree Costs Are as Follows

1 gallon	\$20.00
3 gallon	\$25.00
5 gallon	\$35.00
10 gallon	\$85.00
15 gallon	\$100.00

Please see page 8 for an order form.

Office Space for Rent

The Johnson County SWCD has office space available for rent in our building. We are located in downtown Franklin on Jefferson Street.

For more information please contact
Ric Schlosser
317-736-9540 ext. 102.



Johnson County Soil & Resource

Great service comes from the heart...and



**Heartland
Community Bank**

Member FDIC

Farmers Mutual Insurance
since 1894

AGENTS:
Charles Billingsly
Gary Long
Brian Morris
Craig Morris
Duane Smith, Manager




MULCH & STONE, LLC

LANDSCAPE MULCH DELIVERED
317 885-1985

HARDWOOD • CYPRESS • PLAYGROUND MULCH
COLORED MULCH • GARDEN COMPOST • AND MORE

www.landscapemulch.com

**Financing for all
your farm needs**

Real Estate • Equipment
Operating • Insurance • Leasing
www.e-farmcredit.com



Tom Dougherty Amanda Stigall Lori Tennell
(317) 736-6664

PREMIER AG

1075 E Second Street, P.O. Box 1947
Columbus, IN 47202-1947

Office: Columbus (812) 379-9501

Locations:
Columbus, Franklin, Greensburg,
Hope, Letts, St. Paul, and Trafalgar


A & K Excavating LLC

Farm Drainage

Ponds * Lakes * Snow Removal

317-441-2579

THE OUTBACK FENCE CO.
Farm Fencing



(317) 422-8104
Duane Plummer
4151 N. 400 W.
Bargersville, IN 46106

Towne & Country Realty Group

Looking to buy or sell?
For all your real estate needs call

Beth McNabb
Realtor

317-346-6900
www.TCRealtyGroup.com

901 N. Main St.
Franklin, Indiana 46131
realestate@bethmcnabb.com

Ron L Dixon
Natural Resources Consulting, Inc.



Phone: (317) 862-7446
Fax: (317) 862-7437

ELLIS DUMPSTERS
EXCAVATING



783-5416

2222 Bluff Road
Indianapolis, IN 46225

Crystal Springs Grain LLC
3776 E 500 N
Whiteland, IN 46184
(317) 736-8210



Stores and Handlers of
Waxy Maize
for
National Starch and Chemical Company

**Farm and Residential
Appraisals**

Bill Harbert
State Certified
(317) 535-8912

Water Conservation District Guide

Kahre & Associates, P. C.

David A. Kahre, CPA
Accounting • Tax • Financial

1118 N. Main, Suite A Phone: (317) 736-7440
Franklin, IN 46131 Fax: (317) 736-7507


E-mail: davekahre@gmail.com



LINCOLN BANK
live. play. prosper.

Serving Johnson County with 6 Locations!

WWW.LINCOLNBANKONLINE.COM **1.888.895.6539**
MEMBER FDIC



Greene
Crop Consulting, LLC

Danny Greene, MS, CCA
Soil Fertility & Agronomy Consulting • Crop Insurance

PO Box 784 • Franklin, Indiana 46131
(317) 628-9079
danny@greencrop.com

POE
Freezer Beef

Keegan Poe
1108W 200N • Franklin, IN 46131
317-346-6546 • 317-850-1663
moocow.kpoe@att.net
Ground beef available anytime

Country Market

Sheep & Goat Equipment  Large & Small Animal Feed

5939 W. S.R. 135, Trafalgar, IN 46181

812-597-0021 M-F 9:00-6:00
Sat 9:00-5:00 

Crop Production Services 

758 E. Hamilton Ave.
P.O. Box 157
Franklin, IN 46131
(317) 736-8384

AGRONOMIC PRODUCTS / SERVICES

**Weddle Farm Draining
and Excavating**

Lee M. Weddle
Morgantown IN
317-797-4722

See your ad here

We have space available in upcoming issues for your ad.

Please contact the SWCD office for more information.



INDIANA FARM BUREAU INSURANCE
www.infarmbureau.com

Franklin	Greenwood	White River
99 N. Morton St.	972 S. Emerson Pkwy	341 S. State Rd. 135
736-6128	Suite B	882-9700
	888-9292	

Auto • Home • Life • Annuities • Business • Farm

	1 Gallon	3 Gallon	5 Gallon	10 Gallon	15 Gallon	Quantity	Price Each	Total
Accolade® Elm		*						
Allegheny Serviceberry					*			
American Cranberry Bush		*						
American Plum		*						
Arborvitae				*				
Arrowwood Viburnum		*						
Autumn Blaze® Maple		*			*			
Autumn Brilliance® Serviceberry		*						
Bald Cypress					*			
Black Chokeberry		*						
Blackhaw Viburnum		*						
Bur Oak		*						
Buttonbush	*							
Common Ninebark		*						
Dawn Redwood				*				
Eastern Red Cedar	*	*						
English Oak		*			*			
Grey Dogwood		*						
Hazelnut		*						
Jane Magnolia	*							
Nannyberry Viburnum		*						
Norway Spruce	*		*					
Overcup Oak		*						
Pagoda Dogwood		*						
Persimmon		*						
Pin Oak			*		*			
Red Bud		*						

Red Oak	*	*			*			
Red Osier Dogwood		*						
Red Sunset Maple		*			*			
River Birch	*							
Shadblow Serviceberry	*							
Shingle Oak	*				*			
<i>Shumard Oak</i>	*	*	*		*			
Silky Dogwood		*						
Sourwood	*							
Speckled Alder		*			*			
Sugar Maple	*							
Sun Valley Maple					*			
Swamp White Oak	*				*			
Triumph® Elm		*						
Washington Hawthorn	*							
White Pine			*					
Winterberry Holly			*					

* indicates what size the tree is available.

Orders are due by

Please circle the size of the trees you wish to order April 29, 2009

Name _____

Street Address _____

City _____ State _____ Zip _____

Phone Number (_____) _____ - _____

Cooperator of the Year



This year's recipient for the 2008 Cooperator of the Year award was Mark Henderson. Mark participated in several projects with the SWCD office, both through our Youngs Creek Watershed program and the Emergency Conservation Assistance Program. In addition, Mark has worked with USDA on several conservation projects and has more in the works for 2009. We would like to congratulate Mark Henderson on winning the 2008 Cooperator of the Year award. Pictured here is (L-R) Virginia Pollert, Scott Henderson and Crystal Henderson accepting for their father.

Lee A. Moore Distinguished Service Award

The Lee A. Moore Distinguished Service Award was presented to Bill Kirklin. This award is presented to individuals that have distinguished themselves through their service to the Johnson County Soil & Water Conservation District, by serving in various capacities on the Board of Supervisors.

Bill served many years on the Board of Supervisors in various capacities, including Chairman. It's the dedication and volunteerism of individuals like Bill that make our programs successful.

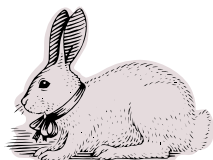
Join us in thanking Bill Kirklin for his past and continued support of the Johnson County SWCD.



Ag Days

The Johnson County SWCD, Youngs Creek & Indian Creek Watershed Projects, and other agriculture groups will be participating in the annual county Ag Day on March 20th. Groups of 4th graders from across Johnson County will be attending this event. This is an important educational opportunity for our community. The SWCD will be presenting information about soil erosion and no-till. The students will also have the opportunity to hear from the counties' commodity groups.

The students will also have the opportunity to view livestock from around the county and hear information about how they are raised and the products produced from them. Please watch the next issue for pictures and other stories from Ag Day.



USDA Offers Stimulus Dollars to Help Farmers With Flood-Damaged Land

INDIANAPOLIS, March 9, 2009 –USDA announced today that a portion of the American Recovery and Reinvestment Act (Stimulus Package) is being offered to farmers whose fields have had flood damages. The damages could have happened last June, or could be in fields that have a recurring flood problem. Land qualifies if it has been flooded at least once in the past 12 months, or twice in the past 10 years.

“This has come up pretty fast, and we want to allocate the money quickly so it can help put people to work,” says Jane Hardisty, state conservationist for USDA’s Natural Resources Conservation Service (USDA-NRCS). “Nationally we have \$145 million available, and we see this as an opportunity to offer lump-sum payments to farmers who have flooding problems, and to help stimulate the economy in communities all over Indiana. In fact, we are announcing a sign-up period beginning today, Monday, March 9, to Friday, March 27.”

Floodplain easements can benefit landowners who continually fight flooding on cropland. For example, on a 100-acre crop field in Owen County that floods one out of every three years, even with crop insurance a farmer is estimated to be losing approximately \$5,000 in revenue annually (taking costs of planting, production and field preparation due to flood damage into consideration). If that land is enrolled in the Floodplain Easement Program, the landowner would receive a one-time payment of \$215,000 for the 100 acres of cropland. Instead of losing an average of \$5,000 per year on this land, the landowner now has \$215,000 to apply to farming operations in other areas less susceptible to flooding.

Easement compensation is based on a cap set for each county, and the land is valued either as agricultural land or non-agricultural land. Agricultural land county caps range from \$2,019 per acre, to \$4,687 per acre. Non-agricultural land ranges from \$1,004 to \$2,819. Actual rates for each county can be found on-line at the web-site listed below.

“We have seen places here in Indiana where flooding losses happen frequently enough, and productivity is low enough that they are not worth the investment it takes to continue to farm them,” says State Conservationist Jane Hardisty. “And the Floodplain Easement dollars would allow farmers to move their operations to more suitable land.”

Lands put into the Floodplain Easement Program will generate many public benefits, such as increased flood protection, enhanced fish and wildlife habitat, improved water quality, and a reduced need for future public disaster assistance. Other benefits include reduced energy consumption when certain agricultural activities and practices are eliminated and increased carbon sequestration as permanent vegetative cover is re-established.

The easements that NRCS buys from participants are permanent easements, and they stay with the property if it is sold. The payment is a one-time payment. If restoration work is done on a

Continued on page 12

USDA Offers Stimulus Dollars to Help Farmers With Flood-Damaged Land Cont.

Continued from page 11

site, NRCS can pay for 100% of the costs. More information about the Floodplain Easement Program can be found on-line at: <http://www.in.nrcs.usda.gov/programs/FEP/FEHomepage.html> Interested landowners can get more information and apply by visiting NRCS at the local USDA Service Center. USDA Service Center location can be found at: <http://offices.sc.egov.usda.gov/locator/app>

Contact:

Tony Branam, District Conservationist, (317) 736-6822, ext. 3

Michael McGovern, Public Affairs Specialist, (317) 290-3200, ext. 324

Tile Mapping Project

Do you have maps of drainage tile for your land? Have you recently installed tile or are you planning on installing tile in the future? Have you recently repaired any tiles? If you answered yes to any of these questions, please call our office.

We are currently working on creating a master private drain tile map for the county. We receive a lot of inquiries about tile locations, and unfortunately, record keeping of installed tile has been scarce for many years.

Our office utilizes a mobile GPS mapping system that does not require an ATV or any other vehicle to map tiles, so there is no disturbance to your property. Just give us a call and we'll map your tile lines at no cost to you.

As we add to our inventory of tile maps, we can create customized maps for landowners with tiles drawn over any number of layers. We can create maps with tile lines, sizes, material, aerial photos, roads, you name it! Our maps are free of charge and can be tailored to meet your needs.

We can also create computerized maps from hand-drawn installation maps.

If you would like to create your own maps, we will provide you with the data gathered and a program to use at no cost.

Please call Andy at (317) 736-9540 x103 for a map or to schedule a visit. Any tile information supplied to our office will be returned after it is entered into our computer.



Watershed Connection

March, 2009

WATERSHED STAFF

Debra Ashack
Watershed Coordinator
debra-ashack@iaswcd.org

David Harrell
Conservation Resource
Specialist
david-harrell@iaswcd.org

550 East Jefferson Street
Suite 202
Franklin, IN 46131
(317) 346-6102

Martinsville Area
(317) 878-4064

www.swcd.org/watershed.htm

Watershed Update

This phase of the Section 319 Grant comes to a close as of March 31, 2009. The final Indian Creek Watershed Management Plan (WMP) has been submitted to the Indiana Department of Environmental Management and a Final Report will be submitted upon the disbursement of all the Youngs Creek cost-share funds.

Thank you to all our Steering Committee members who spent the past 27 months discussing the future of the Indian Creek Watershed and goals to improve water quality for its residents. Special thanks go out to Steve Cravens, Bob Atnip, Terry Fenimore, Jennifer Sobecki, Norman Voyles, and chairman Pat Clark. A special thank you to Painted Hills for the free use of their clubhouse for our meetings during this time. Thank you for all your input and hard work.

To carry the work of this project forward, Steve Cravens, Terry Fenimore and Norman Voyles have agreed to continue looking for additional funding and address the goals and objectives outlined in the WMP. Good luck to them. We hope they have many willing volunteers step up to be good stewards of the Indian Creek Watershed.

Cost-share Update

As the Youngs Creek Grant comes to a close at the end of March, we still have several projects underway throughout the watershed. All money in the cost-share program has been allocated at this time. We have applied for and received an extension for the cost-share portion of the grant to get these projects completed. The flood of 2008 and the harsh winter led to the need to for the extension, as these events hindered the construction season. If you still have conservation projects in mind please contact the district to explore other funding options that may be available, and as always technical assistance is offered free of charge. Thank you to all the participants of the Youngs Creek cost-share program.

Inside this issue:

Watershed Update	13
Cost-share	13
Watershed Awards	14

Watershed Projects Present Awards at Annual Meeting

Community Service Award



The 2008 Community Service Award was presented to John and Kathy Harrell of Trafalgar for their support and sponsorship in hosting the Area Soils Judging Contest in October 2007 and for their continued support for many of the watershed project's educational programs.

Pictured here are (L-R) David Harrell, Debra Ashack, Kathy Harrell, John Harrell

Environmental Awareness Award

The 2008 Environmental Awareness Award was presented to the Franklin Parks Department for bringing awareness to the importance of riparian buffers by their installation of riparian buffer trees in the parks throughout Franklin.

Informational signs were also posted to educate the public on the function and importance of such buffers.

The Parks Department continues to work on additional conservation projects in Franklin. Please watch future issues for more information.

Pictured here receiving the award is Chip Orner of Franklin Parks department and Debra Ashack.



Would you like to own a rain barrel?



The Johnson County SWCD is selling rain barrels. Each recycled rain barrel includes a downspout diverter kit. The diverter kit allows the rain barrel to be

filled, then the remaining water can continue through the downspout. This closed system eliminates any problems with mosquitoes. The selling price is \$100 and all money goes to support the educational programs offered by the SWCD.



Johnson County SWCD Rain Barrel Order Form

Name _____

Street Address _____

City _____ State _____ Zip _____

Phone Number (____) _____ - _____

Email _____ @ _____

Quantity _____



Visit us on the web at www.swcd.org

We are located at 550 East Jefferson Street in Franklin, Indiana in the Alva B. Neal Building (old² Franklin High School Building) across from

Available at The SWCD

2007 Plat Books \$15.00 (+ \$2.00 if mailed)

Sponsored by the Johnson County Youth Conservation Board

Marking Flags \$10.00 per bundle (100 flags per bundle)

Erosion Control Netting .25 cents per linear foot (includes staples)

Geotextile Fabric, 8 oz non woven, 15 ft wide

\$1.75 per linear foot

Rain Barrels \$100.00

Straw Blanket (Call for Price)

Contact the SWCD office at 317-736-9540

to learn about and utilize other valuable materials we can offer **FREE** of charge.

Forwarding Service Requested

550 East Jefferson Street
Franklin, IN 46131
Phone: 317-736-9540
Fax: 317-736-9344

Johnson County
Soil and Water Conservation District

PRSRT STD
U.S. Postage
PAID
Franklin, IN